



**Government of India  
Ministry of Earth Sciences  
India Meteorological Department**



**Press Release**

**Date: 29<sup>th</sup> August, 2025**

**Time of Issue: 1345 hours IST**

**Subject: i) Heavy to very heavy rainfall likely over Konkan & Goa, Madhya Maharashtra, Marathawada, Gujarat Region, Kerala and Coastal Karnataka till 30<sup>th</sup> August with extremely heavy falls over Gujarat Region today.**

**ii) Isolated heavy rainfall spell likely to continue over Northwest India during next 5 days with isolated very heavy rainfall over Himachal Pradesh during 29<sup>th</sup>-31<sup>st</sup> and Uttarakhand during 29<sup>th</sup> August-02<sup>nd</sup> September, 2025.**

**Realised weather during past 24 hours till 0830 hours IST of today, the 29<sup>th</sup> August, 2025:**

- ❖ **Heavy to very heavy rainfall at some places with Extremely heavy rainfall ( $\geq 21$  cm)** has been recorded at isolated places over Coastal Karnataka, Telangana; **Heavy to very heavy rainfall with isolated Extremely heavy rainfall** over Marathawada.
- ❖ **Very heavy rainfall (12-20 cm)** has been recorded at isolated places over Kerala, Tamil Nadu, East Rajasthan, Gujarat Region, Himachal Pradesh, Uttarakhand, East Uttar Pradesh, Sub-Himalayan West Bengal, West Madhya Pradesh.
- ❖ **Heavy rainfall (7-11 cm)** has been recorded at isolated places over Punjab, Haryana, Konkan, Goa, Madhya Maharashtra, Arunachal Pradesh, Assam & Meghalaya, South Interior Karnataka, Lakshadweep and Vidarbha.

**For more details of realised weather, kindly refer [Annexure I](#).**

**i. Weather Systems, Forecast and Warnings (refer to Annexure II & III):**

- ❖ The western end of Monsoon trough runs near normal position and eastern end runs south of its normal.
- ❖ An **upper air cyclonic circulation** lay over Vidarbha & neighbourhood in lower & middle tropospheric levels tilting southwestwards with height.
- ❖ A **trough** runs from south Chhattisgarh to north Kerala at middle tropospheric levels.
- ❖ The **Western Disturbance** as a **cyclonic circulation** lay over north Pakistan & adjoining Punjab at middle tropospheric levels.
- ❖ An **upper air cyclonic circulation** lay over northeast Assam & neighbourhood at lower tropospheric levels.

Under the influence of these systems, the following weather is likely:

**West India:**

- ❖ **Extremely heavy rainfall very likely at isolated places over Gujarat Region today.**
- ❖ **Isolated heavy rainfall** is very likely over Gujarat region, Konkan & Goa, Madhya Maharashtra during next 7 days; Marathawada on 29<sup>th</sup> & 30<sup>th</sup> and Saurashtra & Kutch on 29<sup>th</sup> August & 04<sup>th</sup> September with **very heavy rainfall** over Konkan, Goa, Ghat areas of Madhya Maharashtra, Marathawada on 29<sup>th</sup> August.
- ❖ Light to moderate rainfall at most/many places very likely over the region during next 7 days.

**Northwest India:**

- ❖ Isolated **heavy rainfall** likely to continue over Uttarakhand, East Rajasthan during next 7 days; Jammu & Kashmir, Himachal Pradesh, Punjab, Haryana, West Uttar Pradesh during 29<sup>th</sup> August-02<sup>nd</sup> September; West Rajasthan on 31<sup>st</sup> August & 01<sup>st</sup> September; East Uttar Pradesh on 29<sup>th</sup> August, 01<sup>st</sup> & 02<sup>nd</sup> September with

**isolated very heavy rainfall very likely over Himachal Pradesh during 29<sup>th</sup>-31<sup>st</sup>; Uttarakhand during 29<sup>th</sup> August-02<sup>nd</sup> September; Punjab on 30<sup>th</sup>; West Uttar Pradesh on 29<sup>th</sup> August & 01<sup>st</sup> September.**

- ❖ Light/moderate rainfall at most/many places over Northwest India and accompanied with thunderstorm & lightning likely over Uttar Pradesh on 29<sup>th</sup> August; Rajasthan, Jammu-Kashmir-Ladakh-Gilgit-Baltistan-Muzaffarabad, Uttarakhand during next 5 days.

#### **South Peninsular India:**

- ❖ Isolated **heavy rainfall** likely over Coastal Karnataka during next 7 days; Kerala on 29<sup>th</sup>, 30<sup>th</sup> August & on 03<sup>rd</sup> & 04<sup>th</sup> September; Interior Karnataka, Telangana, Lakshadweep, Tamil Nadu on 29<sup>th</sup> August; Coastal Andhra Pradesh & Yanam on 02<sup>nd</sup> & 03<sup>rd</sup> September with **very heavy rainfall over Coastal Karnataka on 29<sup>th</sup> & 30<sup>th</sup> and Kerala on 29<sup>th</sup> August.**
- ❖ Light to moderate rainfall at most/many places accompanied with thunderstorm & lightning likely over the region during next 7 days.

#### **East & Central India:**

- ❖ Isolated **heavy rainfall** likely over Madhya Pradesh during next 7 days; Sub-Himalayan West Bengal & Sikkim during 29<sup>th</sup>-31<sup>st</sup>; Vidarbha on 29<sup>th</sup> August & 04<sup>th</sup> September; Bihar on 29<sup>th</sup> & 30<sup>th</sup>; Jharkhand on 30<sup>th</sup> August, 02<sup>nd</sup> September; Odisha, Chhattisgarh during 31<sup>st</sup> August-03<sup>rd</sup> September with isolated **very heavy rainfall** over Sub-Himalayan West Bengal & Sikkim on 29<sup>th</sup> August.
- ❖ Light to moderate rainfall at most/many places accompanied with thunderstorm & lightning likely over the region during next 7 days.

#### **Northeast India:**

- ❖ Isolated **heavy rainfall** likely to continue over Arunachal Pradesh on 29<sup>th</sup> & 30<sup>th</sup> August, 04<sup>th</sup> September; Assam & Meghalaya, Nagaland, Manipur, Mizoram & Tripura during 29<sup>th</sup> August-04<sup>th</sup> September with **very heavy rainfall** over Arunachal Pradesh and Nagaland, Mizoram on 29<sup>th</sup> August.
- ❖ Light/moderate rainfall at many places accompanied with thunderstorm & lightning likely during next 5 days.

#### **Fishermen warning:**

Fishermen are advised not to venture into the following from 29<sup>th</sup> August to 03<sup>rd</sup> September 2025 to the following Areas:

##### **Arabian Sea:**

Along and off the Somalia, Oman coasts and adjoining sea areas; over most parts of central Arabian Sea and adjoining areas of southwest Arabian Sea on 29<sup>th</sup> August to 03<sup>rd</sup> September; over Lakshadweep, Comorin areas during 29<sup>th</sup> August; along and off south Gujarat coast on 29<sup>th</sup> August & during 31<sup>st</sup> August to 03<sup>rd</sup> September; along and off Konkan, Goa coasts on 29<sup>th</sup> August & during 31<sup>st</sup> August to 03<sup>rd</sup> September, Karnataka coasts during 29<sup>th</sup> August to 01<sup>st</sup> September; along and off Kerala coast during 29<sup>th</sup> August.

##### **Bay of Bengal:**

Off north Andhra Pradesh coasts during 29<sup>th</sup> to 31<sup>st</sup> August; along and off north & adjoining south Andhra Pradesh coasts during 31<sup>st</sup> August to 03<sup>rd</sup> September; over most parts of central & south Bay of Bengal on 29<sup>th</sup> August & during 31<sup>st</sup> August to 03<sup>rd</sup> September; most parts of westcentral, southwest Bay of Bengal, adjoining parts of southeast Bay of Bengal on 30<sup>th</sup> August; Over Gulf of Mannar during 29<sup>th</sup> August to 03<sup>rd</sup> September and over Andaman Sea during 31<sup>st</sup> August to 03<sup>rd</sup> September.

#### **ii. Weather conditions and forecast over Delhi/NCR during 29<sup>th</sup> August to 01<sup>st</sup> September 2025 (Annexure IV)**

**For more details, kindly refer National Weather Bulletin:**

[https://mausam.imd.gov.in/responsive/all\\_india\\_forecast\\_bulletin.php](https://mausam.imd.gov.in/responsive/all_india_forecast_bulletin.php)

**For District wise warnings refer:** <https://mausam.imd.gov.in/responsive/districtWiseWarningGIS.php>

**For Fishermen warning refer** <https://rsmcnewdelhi.imd.gov.in/fishermen-warning.php>

**Rainfall recorded (in cm) during past 24 hours till 0830 hours IST of today, the 29<sup>th</sup> August:**

**Marathwada:** Loha (dist Nanded), Kandhar (dist Nanded) 28 Each; Naigaon Khairgaon (dist Nanded) 25; Ahmedpur (dist Latur) 22; Chakur (dist Latur), Mukhed (dist Nanded) 20 Each; Umari (dist Nanded), Mudkhed (dist Nanded) 18 Each; Bhokar (dist Nanded) 17; Ardhapur (dist Nanded) 16; Renapur (dist Latur), Nanded - IMD Parttime (dist Nanded), Dharmabad (dist Nanded) 15 Each; Jalkot (dist Latur) 14; Shirur Anantpal (dist Latur) 12; Udgir - IMD Parttime (dist Latur) 10; Degloor - Fmo (dist Nanded), Ambejogai/mominabad (dist Beed), Udgir (dist Latur), Tondapur- ARG (dist Hingoli) 9 Each; Dharur (dist Beed), Himayatnagar (dist Nanded) 8 Each;

**Telangana:** Gandhari (dist Kamareddy) 27; Banswada (dist Kamareddy) 24; Mudhole (dist Nirmal) 22; Sadasivanagar (dist Kamareddy), Lingampet (dist Kamareddy), Varni (dist Nizamabad) 16 Each; Dhar Palle (dist Nizamabad), Dich Palle (dist Nizamabad) 15 Each; Tadwai (dist Kamareddy), Yellareddy (dist Kamareddy) 14 Each; Bheemgal (dist Nizamabad), Banswada(ARG) (dist Kamareddy) 13 Each; Medak (dist Medak), Gangadhara (dist Karimnagar) 12 Each; Kamareddy (dist Kamareddy), Kathlapur (dist Jagtial), Nizam Sagar (dist Kamareddy) 11 Each; Kotgiri (dist Nizamabad), Chandurthi (dist Rajanna Sircilla) 10 Each; Birkoor (dist Kamareddy), Bodhan (dist Nizamabad), Velpur (dist Nizamabad) 9 Each;

**Coastal Karnataka:** Manki (dist Uttara Kannada) 21; Mulki (dist Dakshina Kannada) 18; Mangaluru AP (dist Dakshina Kannada), Shakti Nagar (dist Dakshina Kannada) 14 Each; Sulya (dist Dakshina Kannada) 13; Mani (dist Dakshina Kannada), Udupi (dist Udupi), Siddapura (dist Udupi) 11 Each; Honavar (dist Uttara Kannada) 10; Uppinangadi (dist Dakshina Kannada), Karkala (dist Udupi), Kundapur (dist Udupi), Belthangadi (dist Dakshina Kannada), Mangaluru (dist Dakshina Kannada), Gersoppa (dist Uttara Kannada) 9 Each; Mudubidre (dist Dakshina Kannada), Puttur HMS (dist Dakshina Kannada) 8 Each; Gokarna (dist Uttara Kannada), Dharmasthala (dist Dakshina Kannada), Kumta (dist Uttara Kannada), Kota (dist Udupi) 7 Each;

**East Uttar Pradesh:** Nighasan (dist Kheri) 19; Kakardharighat (dist Shrawasti) 14;

**Kerala & Mahe:** Padannakkad AWS (dist Kasargod) 19; Hosdurg (dist Kasargod), Peringome AWS (dist Cannur) 18 Each; Chemberi AWS (dist Cannur), Madikkai AWS (dist Kasargod) 16 Each; Tellichery (dist Cannur) 15; Kudulu (dist Kasargod), Muliya AWS (dist Kasargod) 14 Each; Ayyankunnu AWS (dist Cannur) 13; Taliparamba (dist Cannur), Vadakara (dist Kozhikode), Mahe (dist Mahe), Padinjathara Dam AWS (dist Wyanad) 12 Each; Kannur (dist Cannur) 11; Perumpavur (dist Ernakulam), Pinarayi AWS (dist Cannur), Panathur AWS (dist Kasargod), Vadakara AWS (dist Kozhikode), Alwaye PWD (dist Ernakulam) 10 Each;

**Uttarakhand:** Haripur (dist Dehradun) 18; Kapkot (dist Bageshwar) 14; Karnaprayag (dist Chamoli), Jakholi (dist Rudraprayag) 13 Each; Sama (dist Bageshwar), Ukhimath (dist Rudraprayag) 12 Each; Khatima (dist Udham Singh Nagar), Dharchula (dist Pithoragarh) 11 Each; Chamoli (dist Chamoli), Loharkhet (dist Bageshwar), Roshnabad (dist Hardwar) 10 Each; Chakrata (dist Dehradun), Didihat (dist Pithoragarh) 8 Each; Banbasa (dist Champawat), Ganganagar (dist Rudraprayag) 7 Each;

**Gujarat Region:** Umerpada (dist Surat) 17; Idar (dist Sabarkantha) 14; Meghraj (dist Aravalli) 11; Dahegam (dist Gandhinagar) 10; Quant (dist Chhota Udepur), Devgad Baria (dist Dahod), Himatanagar (dist Sabarkantha) 8 Each; Vyara AWS (dist Tapi), Vyara (dist Tapi), Jetpur Pavi (dist Chhota Udepur) 7 Each;

**Tamil Nadu:** Taluk Office Pandalur (dist Nilgiris) 15; Worth Estate Cher (dist Nilgiris) 12; Chinnakalar (dist Coimbatore), Devala (dist Nilgiris), Avalanche (dist Nilgiris) 10 Each; Upper Gudalur (dist Nilgiris) 7;

**Himachal Pradesh:** Jatton Barrage (dist Sirmaur) 14; Palampur (dist Kangra) 9; Bharwain (dist Una) 8; Paonta (dist Sirmaur), Kataula (dist Mandi) 7 Each;

**East Rajasthan:** Sajjangarh SR (dist Banswara) 14; Dug (dist Jhalawar) 11; Khushalgarh (dist Banswara) 7;

**Sub Himalayan West Bengal & Sikkim:** Suryasen Mahavidyalaya (dist Darjeeling) 13; Noweranuddi Tea Garden (dist Jalpaiguri) 12; Jalpaiguri (dist Jalpaiguri), Siliguri PTO (dist Darjeeling) 11 Each; Champasari (dist Darjeeling), Denguajhar Tea Garden (dist Jalpaiguri), Saraswatipur Tea Estate (dist Jalpaiguri) 10 Each; Anandpur Tea Estate (dist Jalpaiguri), Kailashpur Tea Estate (dist Jalpaiguri), Tra Nagrakata (dist Jalpaiguri) 9 Each; Jiti T.e. (dist Jalpaiguri), Kumargram (dist Alipurduar) 8 Each; Kurti T.e. (dist Jalpaiguri) 7;

**West Madhya Pradesh:** Nepanagar (dist Burhanpur) 12; Hatod (dist Indore) 9; Dhar-aws (dist Dhar) 8;

**Arunachal Pradesh:** Daparijo (dist Upper Subansiri) 11;

**Haryana:** Panchkula AWS (dist Panchkula) 11; Morni (dist Panchkula) 9;

**South Interior Karnataka:** Kottigehara (dist Chikkamagaluru), Bhagamandala (dist Kodagu) 11 Each; Agumbe AWS (dist Shivamogga) 10; Kalasa (dist Chikkamagaluru), Napoklu (dist Kodagu) 8 Each; Ponnampet PWD (dist Kodagu) 7;

**Konkan & Goa:** Wada (dist Palghar) 10; Mormugao - Pmo IMD (dist South Goa) 7;

**Assam & Meghalaya:** Mawsynram (dist East Khasi Hills), Cherrapunji (dist East Khasi Hills), Dhemaji (dist Dhemaji) 9 Each; D/Mohanbari AP (dist Dibrugarh), Beki Mathungari (dist Barpeta), Chauldhowaghat (dist Lakhimpur) 8 Each; Cherrapunji(rkm) (dist East Khasi Hills), Guwahati ARG (dist Kamrup Metropolitan), Guwahati City AWS (dist Kamrup Metropolitan) 7 Each;

**Madhya Maharashtra:** Nevasa (dist Ahilyanagar) 8; Navapur (dist Nandurbar) 7;

**Vidarbha:** Joiti (dist Chandrapur) 8; Mahagaon (dist Yeotmal), Digras (dist Yeotmal) 7 Each;

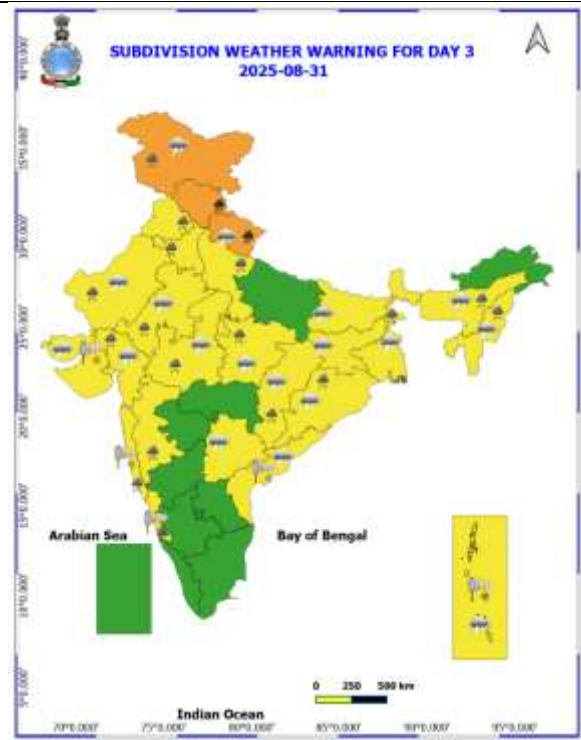
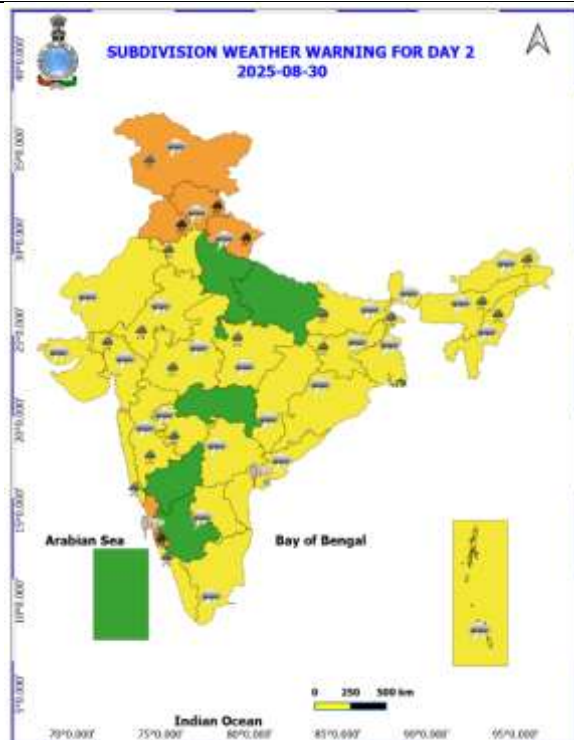
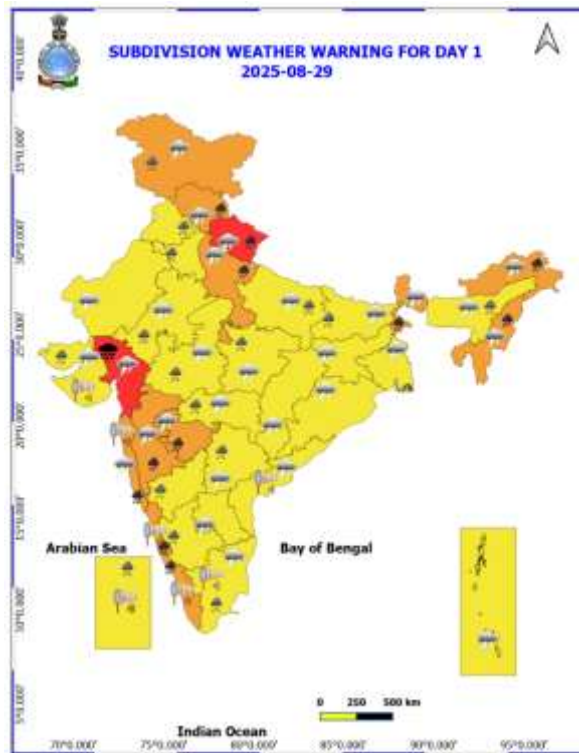
**Punjab:** Mohali AWS (dist Sas Nagar (mohali)), Ghanauli (dist Rupnagar) 8 Each;

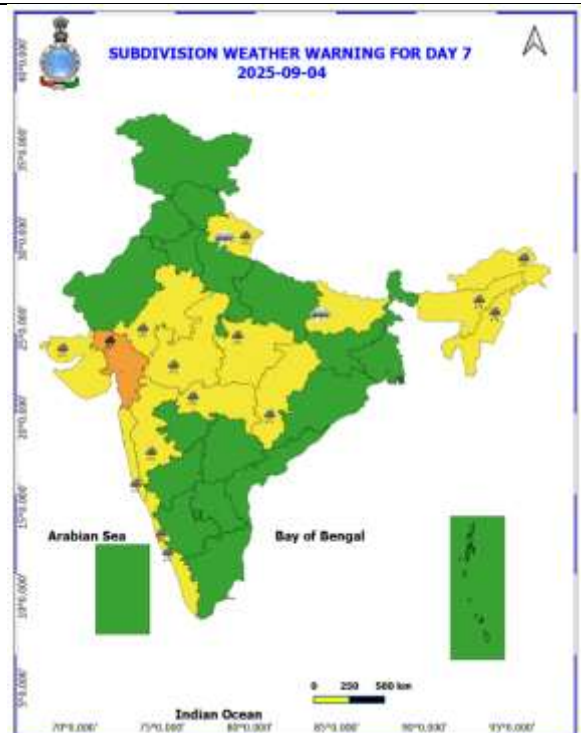
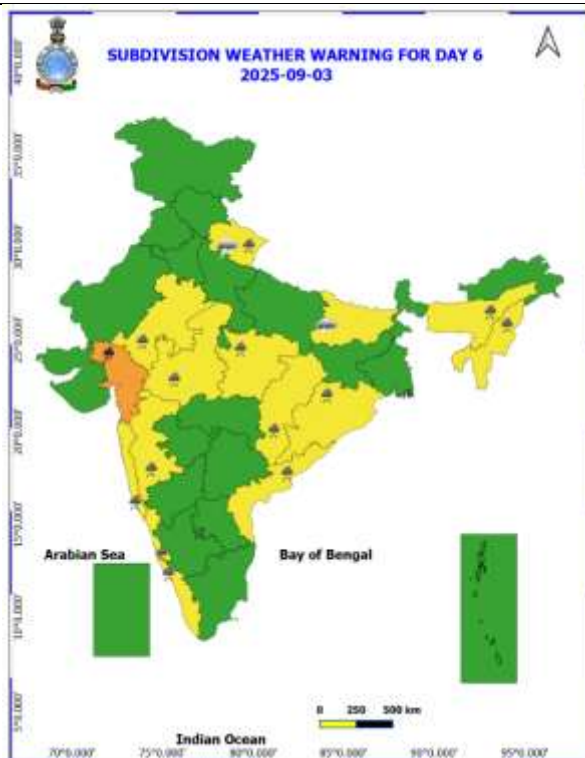
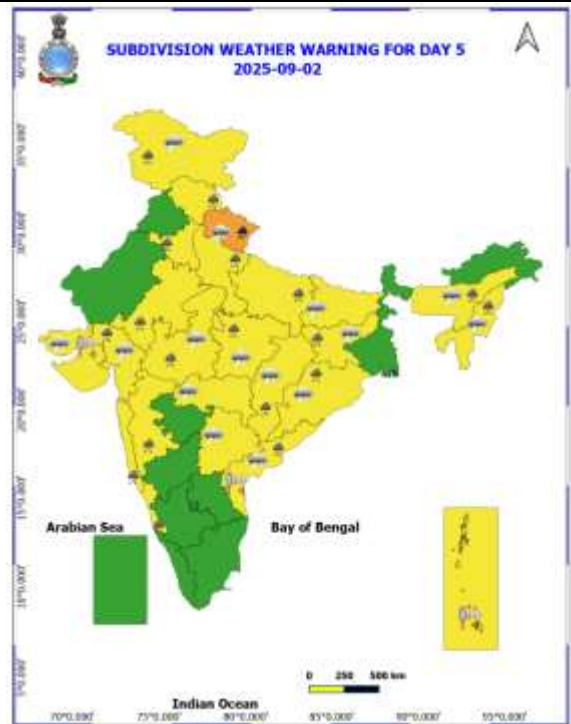
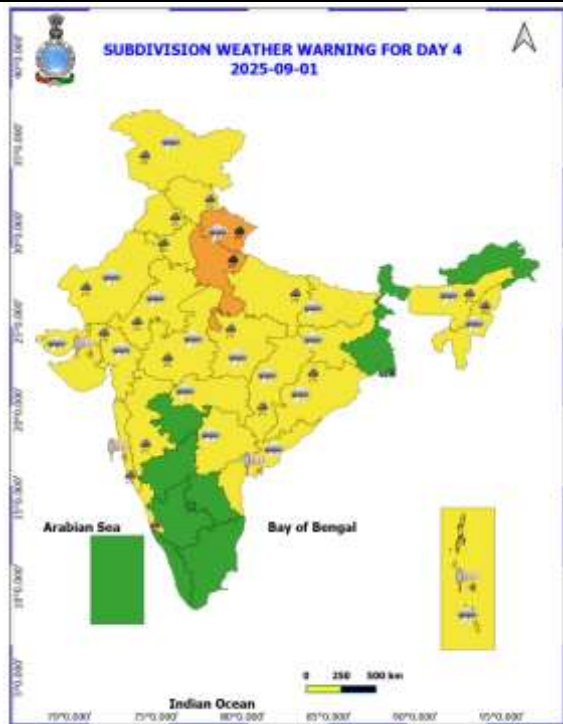
**North Interior Karnataka:** Aurad (dist Bidar) 8.

Table-1								
7 Days Rainfall Forecast								
S.No.	Subdivision	29- Aug	30- Aug	31- Aug	1- Sep	2- Sep	3- Sep	4- Sep
		Day 1	Day 2	Day 3	Day 4	Day 5	Day 6	Day 7
1	ANDAMAN & NICOBAR ISLANDS	FWS	WS	WS	WS	FWS	WS	FWS
2	ARUNACHAL PRADESH	WS	FWS	SCT	SCT	SCT	SCT	SCT
3	ASSAM & MEHGHALAYA	WS	FWS	FWS	FWS	FWS	FWS	FWS
4	NAGALAND, MANIPUR, MIZORAM AND TRIPURA	FWS	FWS	FWS	FWS	FWS	FWS	FWS
5	SUB HIMALAYAN WEST BENGAL & SIKKIM	WS	WS	FWS	FWS	FWS	FWS	FWS
6	GANGETIC WEST BENGAL	WS	FWS	FWS	SCT	FWS	FWS	FWS
7	ODISHA	SCT	FWS	FWS	WS	WS	WS	FWS
8	JHARKHAND	FWS	WS	WS	WS	WS	FWS	FWS
9	BIHAR	SCT	FWS	FWS	FWS	SCT	SCT	SCT
10	EAST UTTAR PRADESH	ISOL	ISOL	SCT	FWS	SCT	ISOL	ISOL
11	WEST UTTAR PRADESH	ISOL	SCT	FWS	WS	FWS	SCT	SCT
12	UTTARAKHAND	WS	WS	WS	WS	WS	FWS	FWS
13	HARYANA, CHANDIGARH & DELHI	FWS	FWS	WS	FWS	FWS	SCT	SCT
14	PUNJAB	FWS	FWS	FWS	FWS	SCT	SCT	SCT
15	HIMACHAL PRADESH	WS	WS	WS	WS	FWS	SCT	SCT
16	JAMMU AND KASHMIR AND LADAKH	SCT	SCT	FWS	WS	FWS	SCT	DRY
17	WEST RAJASTHAN	ISOL	SCT	SCT	SCT	ISOL	ISOL	ISOL
18	EAST RAJASTHAN	FWS	FWS	FWS	FWS	FWS	FWS	FWS
19	WEST MADHYA PRADESH	FWS	WS	WS	WS	FWS	FWS	FWS
20	EAST MADHYA PRADESH	FWS	FWS	WS	WS	FWS	FWS	FWS
21	GUJRAT REGION	WS	WS	WS	WS	WS	WS	WS
22	SAURASHTRA & KUTCH	FWS	SCT	SCT	SCT	SCT	FWS	WS
23	KONKAN & GOA	WS	WS	WS	WS	WS	WS	WS
24	MADHYA MAHARASHTRA	FWS	FWS	SCT	SCT	SCT	SCT	SCT
25	MARATHWADA	WS	FWS	ISOL	ISOL	ISOL	SCT	SCT
26	VIDARBHA	WS	FWS	SCT	SCT	FWS	FWS	FWS
27	CHHATTISGARH	SCT	SCT	FWS	FWS	WS	WS	WS
28	COASTAL ANDHRA PRADESH	SCT	SCT	FWS	SCT	FWS	FWS	SCT
29	TELANGANA	SCT	SCT	SCT	SCT	SCT	SCT	SCT
30	RAYALASEEMA	SCT	ISOL	ISOL	ISOL	SCT	SCT	ISOL
31	TAMILNADU & PUDUCHERRY	ISOL	ISOL	ISOL	ISOL	ISOL	ISOL	ISOL
32	COSTAL KARNATAKA	WS	WS	WS	WS	WS	WS	WS
33	NORTH INTERIOR KARNATAKA	FWS	FWS	SCT	SCT	SCT	SCT	SCT
34	SOUTH INTERIOR KARNATAKA	FWS	SCT	SCT	ISOL	ISOL	SCT	SCT
35	KERALA AND MAHE	WS	WS	FWS	FWS	FWS	WS	WS
36	LAKSHADWEEP	WS	FWS	FWS	SCT	SCT	SCT	FWS

- As the lead period increases forecast accuracy decrease.







- Action may be taken based on ORANGE AND REDCOLOUR warnings.
- Vulnerable regions likely urban and hilly areas action may be initiated for heavy rainfall warning.
- As the lead period increases forecast accuracy decreases.

Detailed districtwise Multi Hazard weather warning for next five days available at  
<https://mausam.imd.gov.in/responsive/districtWiseWarningGIS.php>

**Weather forecast over Delhi/NCR during 29<sup>th</sup> August to 01<sup>st</sup> September 2025****Past Weather:**

There has been no large change in the minimum temperature and rise in maximum temperature up to 4 - 5°C over Delhi/NCR during the past 24 hours. The maximum and minimum temperatures over Delhi were around 33 to 35°C and 25 to 27°C respectively. The minimum temperature was near normal and maximum temperature was below normal up to 1 - 2°C. Generally cloudy sky conditions with predominant surface wind from the northeast/east direction with wind speeds up to 16 kmph prevailed during the past 24 hours. Very light to light rain/thundershowers at few places with moderate rain at isolated places has been recorded in Delhi. Generally cloudy sky conditions with a wind speed of less than 16 kmph from the southeast direction prevailed over the region in the forenoon today.

**Weather Forecast:**

**29.08.2025:** Generally cloudy sky. One or two spells of very light to light rain/thundershowers at most places with moderate rain at isolated places during afternoon/evening. The maximum temperatures over Delhi are likely to be in the range of 30 to 32°C. The maximum temperature will be below normal up to 3 to 5°C. The predominant surface wind will likely be from the southeast direction with a wind speed of up to 15-20 kmph during the afternoon hours. The wind speed will decrease becoming less than 15 kmph from the southeast direction during the evening and night.

**30.08.2025:** Generally cloudy sky. One or two spells of very light to light rain/thundershowers during forenoon/afternoon. The maximum and minimum temperatures over Delhi are likely to be in the range of 30 to 32°C and 22 to 24°C respectively. The minimum temperature will be below normal up to 2 to 4°C and the maximum temperature will be below normal up to 2 to 4°C. The predominant surface wind will likely to be from the southeast direction with a wind speed of up to 14 - 16 kmph during morning hours. The wind speed will gradually increase becoming less than 20 kmph from the southeast direction in the afternoon. The wind speed will decrease becoming less than 15 kmph from the southeast direction during the evening and night.

**31.08.2025:** Generally cloudy sky. Possibility of few spells of very light to light rain/thundershowers at most places with moderate rain at isolated places. The maximum and minimum temperatures over Delhi are likely to be in the range of 30 to 32°C and 22 to 24°C respectively. The minimum temperature will be below normal up to 2 to 4°C and the maximum temperature will be below normal up to 2 to 4°C. The predominant surface wind will likely to be from the southeast direction with a wind speed of up to 10-15 kmph during morning hours. The wind speed will gradually increase becoming less than 18 kmph from the southeast direction in the afternoon. The wind speed will decrease becoming less than 12 kmph from the southeast direction during the evening and night.

**01.09.2025:** Generally cloudy sky. Possibility of few spells of very light to light rain/thundershowers at most places with moderate rain at isolated places. The maximum and minimum temperatures over Delhi are likely to be in the range of 29 to 31°C and 22 to 24°C respectively. The minimum temperature will be below normal up to 2 to 4°C and the maximum temperature will be below normal up to 3 to 5°C. The predominant surface wind will likely be from the southeast direction with a wind speed of less than 15 kmph during the morning hours. The wind speed will gradually increase becoming less than 20 kmph from the southeast direction in the afternoon. The wind speed will decrease becoming less than 15 kmph from the southeast direction during the evening and night.

**Impact expected and Action Suggested due to light to moderate rainfall with thundershowers:**

- Damage to standing crops, Minor to major damage to power and communication lines due to breaking of branches, Partial damage to vulnerable structures due to strong winds, Loose objects may fly.
- People are advised to keep a watch on the weather for worsening conditions and be ready to move to safer places accordingly, stay indoors, close windows & doors and avoid travel if possible, take safe shelters; do not take shelter under trees, do not lie on concrete floors and do not lean against concrete walls, unplug electrical/ electronic appliances, immediately get out of water bodies, keep away from all the objects that conduct electricity.

### Impact & Action Suggested due to

- ❖ **Isolated Extremely heavy rainfall very likely at isolated places over Gujarat Region on 29<sup>th</sup> August.**
- ❖ **Very heavy rainfall** over Konkan, Goa, Ghat areas of Madhya Maharashtra, Marathawada, Kerala, Sub-Himalayan West Bengal, Arunachal Pradesh and Nagaland, Mizoram, on 29<sup>th</sup> August; Himachal Pradesh during 29<sup>th</sup>-31<sup>st</sup>; Uttarakhand during 29<sup>th</sup> August-02<sup>nd</sup> September; Punjab on 30<sup>th</sup>; West Uttar Pradesh on 29<sup>th</sup> August & 01<sup>st</sup> September and Coastal Karnataka on 29<sup>th</sup> & 30<sup>th</sup> August.
- ❖

#### Impact Expected

- Localized Flooding of roads, water logging in low lying areas and closure of underpasses mainly in urban areas of the above region.
- Occasional reduction in visibility due to heavy rainfall.
- Disruption of traffic in major cities due to water logging in roads leading to increased travel time.
- Minor damage to kutcha roads.
- Possibilities of damage to vulnerable structure.
- Localized Landslides/Mudslides/landslips/mudslips/landsinks/mudsinks.
- Damage to horticulture and standing crops in some areas due to inundation.
- It may lead to riverine flooding in some river catchments (for riverine flooding please visit Web page of CWC)

#### Action Suggested

- Check for traffic congestion on your route before leaving for your destination.
- Follow any traffic advisories that are issued in this regard.
- Avoid going to areas that face the water logging problems often.
- Avoid staying in vulnerable structure.

### Agromet advisories for likely impact of Heavy / Heavy to Very Heavy / Extremely Heavy Rainfall

- In **Karnataka**, provide adequate drainage facilities in rice fields and plantations of arecanut and banana in **Coastal Zone**; rice, maize, cotton, ginger fields and plantations of arecanut in **Hill Zone**; maize, ginger fields and plantations of arecanut and black pepper in **Southern Transition Zone** and groundnut, green gram, cotton and pigeon pea fields in **North East Dry Zone**.
- In **Kerala**, ensure adequate drainage facilities in rice nursery and standing crop fields. Provide support to banana plants.
- In **Telangana**, drain out excess water from fields of rice, cotton, maize, soybean, pigeon pea, turmeric and vegetables in **Northern Telangana Zone** and rice, cotton, soybean, maize and pigeon pea in **Southern Telangana Zone**.
- In **Gujarat**, provide mechanical support to horticultural crops and staking or support to vegetables and young fruit plants to avoid lodging due to heavy rains and strong winds. Make arrangements to drain out excess rain water from fields of rice, sugarcane and vegetables in **South Gujarat Heavy Rainfall Zone**; rice, cotton, sugarcane and pigeon pea in **South Gujarat Zone** and rice, pearl millet, pigeon pea, cotton, soybean, maize and castor in **Middle Gujarat Zone**.
- In **Maharashtra**, make arrangements to drain out excess water from fields of rice, finger millet, turmeric, groundnut, vegetables and fruit orchards in **Konkan**; rice, maize, groundnut, soybean, vegetable fields and fruit orchards in **ghat areas of Madhya Maharashtra**; cotton, pigeon pea, soybean, vegetables and fruit orchards in **Vidarbha** and black gram, green gram, soybean, cotton, pigeon pea, groundnut, maize, sorghum, pearl millet, sugarcane, turmeric, vegetables and fruit orchards in **Marathwada**.
- In **Uttarakhand**, maintain proper drainage channels in fields of barnyard millet, finger millet and green gram in **Sub Humid Sub Tropic Zone** and rice, green gram, black gram, sugarcane, maize, groundnut, finger millet and vegetables in **Bhabar and Tarai Zone**. In **Hill Zone**, postpone sowing of vegetable pea and radish and provide proper drainage in fields of finger millet and kidney beans.
- In **Himachal Pradesh**, maintain proper drainage channels in ginger, turmeric and maize fields in **Mid Hills Sub Humid Zone** and rice, maize and vegetable fields in **Sub Montane and Low Hills Sub Tropical Zone**. In **High Hills Sub Temperate Wet Zone**, postpone transplanting of cauliflower, cabbage and broccoli seedlings and make proper drainage channels in fields of maize, finger millet and vegetables to avoid water stagnation.
- In **Jammu and Kashmir**, drain out excess rain water from fields of rice, maize, pulses and vegetables in **Sub Tropical Zone** and maize, *kharif* pulses, rice and vegetables in **Intermediate Zone**. In **Valley**



**Temperate Zone**, ensure proper drainage in fields of maize, kidney beans and vegetables and maintain a thin layer of water in rice fields.

- In **Punjab**, make arrangements to drain out excess water from fields of sugarcane and green gram and maintain proper drainage in chilli fields and remove stagnant rainwater immediately after rainfall in **Undulating Plain Zone**.
- In **Haryana**, make arrangements to drain out excess water from fields of sugarcane, cotton, maize, pearl millet and vegetables in **Eastern Zone**.
- In **Sub-Himalayan West Bengal**, make provision to drain out excess water from *aman* paddy and vegetable fields (chilli, bitter gourd, pointed gourd, okra, brinjal etc.) in **Terai Zone**.
- In **Meghalaya**, maintain proper drainage in ginger and vegetable fields and fruit orchards. Provide support to banana plants to prevent lodging. Maintain a thin 2-3 cm layer of stagnant water in rice fields after transplanting.
- In **Arunachal Pradesh**, ensure proper drainage in rice fields and maintain 5-7 cm water level. Maintain drainage channels in finger millet, banana and vegetable fields. Strengthen the bunds in millet fields to prevent erosion and seedling washout.

#### Livestock / Fishery

- Keep the animals inside the shed during heavy rainfall and provide them balanced feed.
- Store feed and fodder in a safe place to prevent spoilage.
- Construct an outlet with proper netting around the ponds to drain out excess water, thereby preventing fish from escaping in case of overflow.

#### Agromet advisories for likely impact of Thunderstorm / Gusty Winds / Squally Winds

- Provide mechanical support to horticultural crops and staking or support to vegetables and young fruit plants / fruit-bearing plants to avoid lodging due to strong winds.

#### Flash flood guidance:

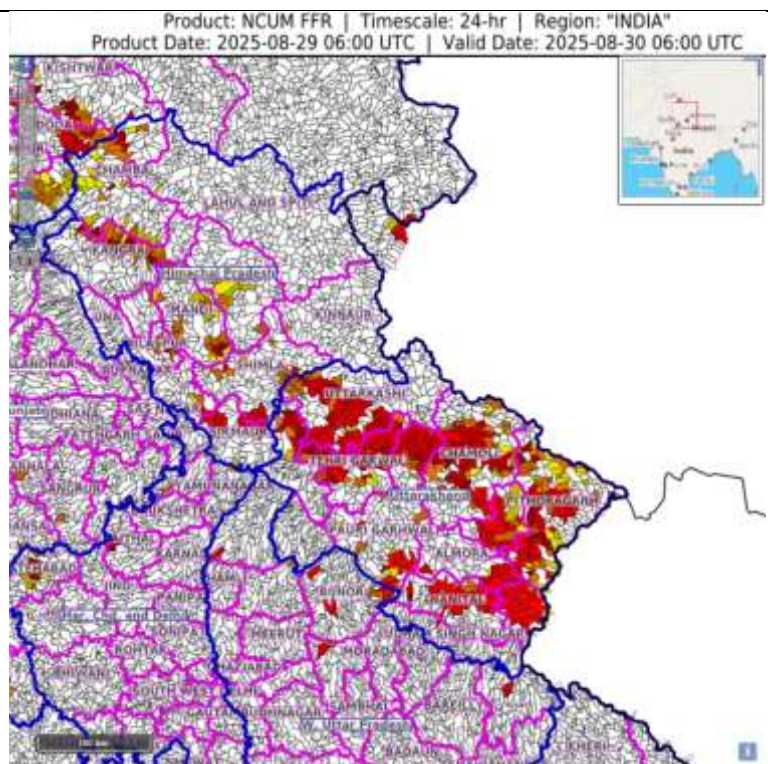
24 hours Outlook for the Flash Flood Risk (FFR) till 1130 IST of 30-08-2025:

Moderate to high flash flood risk likely over few watersheds & neighbourhoods of following Met Sub-divisions during next 24 hours.

Himachal Pradesh - Chamba, Kangra, Kullu, Mandi, Solan, Shimla and Sirmour districts.

Uttarakhand - Almora, Bageswar, Chamoli, Champawat, Dehradun, Pauri Garwal, Nainital, Tehri Garwal, Rudrapur, and Pithoragarh districts.

Surface runoff/ Inundation may occur at some fully saturated soils & low-lying areas over Area of Concern (AoC) as shown in map due to expected rainfall occurrence in next 24 hours.

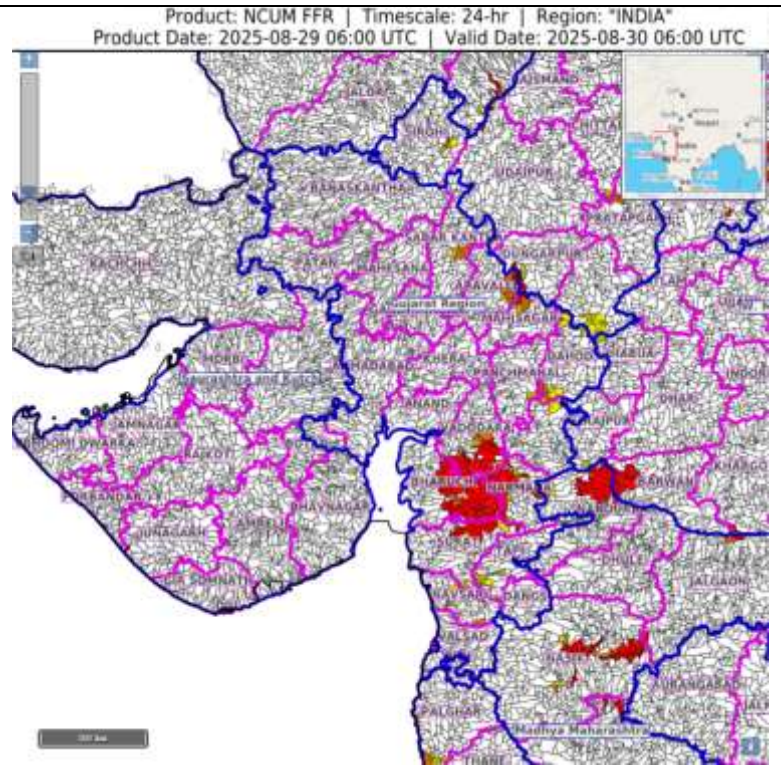


24 hours Outlook for the Flash Flood Risk (FFR) till 1130 IST of 30-08-2025:

Low to Moderate flash flood risk likely over few watersheds & neighbourhoods of following Met Sub-divisions during next 24 hours.

Gujarat Region –Sabar Kantha, Aravalli, Mahisgara, Dahod, Panchmahal, Chhotta Udaipur, Vadodara, Bharuch, Narmada and Surat districts.

Surface runoff/ Inundation may occur at some fully saturated soils & low-lying areas over Area of Concern (AoC) as shown in map due to expected rainfall occurrence in next 24 hours.



#### Legends & abbreviations:

- ❖ **Heavy Rain:**64.5-115.5mm; **Very Heavy Rain:**115.6-204.4mm; **Extremely Heavy Rain:** >204.4mm.
- ❖ **Obsy:** Observatory; Automatic Weather Station; **ARG:** Automatic Rain Gauge; **dist:** District; **NH:** National Highway; **KVK:** Krishi Vigyan Kendra; **DVC:** Damodar Valley Corporation; **PTO:** Part Time Office, **Aero:** Aerodrome, **IAF:** Indian Air Force.
- ❖ **Region wise classification of meteorological Sub-Divisions:**
  - **Northwest India:** Western Himalayan Region (Jammu-Kashmir-Ladakh-Gilgit-Baltistan-Muzaffarabad, Himachal Pradesh and Uttarakhand); Punjab, Haryana-Chandigarh-Delhi; West Uttar Pradesh, East Uttar Pradesh, West Rajasthan and East Rajasthan.
  - **Central India:** West Madhya Pradesh, East Madhya Pradesh, Vidarbha and Chhattisgarh.
  - **East India:** Bihar, Jharkhand, Sub-Himalayan West Bengal & Sikkim; Gangetic West Bengal, Odisha and Andaman & Nicobar Islands.
  - **Northeast India:** Arunachal Pradesh, Assam & Meghalaya and Nagaland, Manipur, Mizoram & Tripura.
  - **West India:** Gujarat Region, Saurashtra & Kutch, Konkan & Goa, Madhya Maharashtra and Marathawada.
  - **South India:** Coastal Andhra Pradesh & Yanam, Telangana, Rayalaseema, Coastal Karnataka, North Interior Karnataka, South Interior Karnataka, Kerala & Mahe, Tamil Nadu, Puducherry & Karaikal and Lakshadweep.



## LEGENDS

1. अंडमान और निकोबार द्वीपसमूह

2. अरुणाचल प्रदेश

3. असम और मेघालय

4. नागालैंड, मणिपुर, मिजोरम और त्रिपुरा

5. उप-हिमालयी पश्चिम बंगाल और सिक्किम

6. गंगीय पश्चिम बंगाल

7. ओडिशा

8. झारखंड

9. बिहार

10. पूर्वी उत्तर प्रदेश

11. पश्चिम उत्तर प्रदेश

12. उत्तराखंड

13. हरियाणा, चंडीगढ़ और दिल्ली

14. पंजाब

15. हिमाचल प्रदेश

16. जम्मू और कश्मीर और लद्दाख

17. पश्चिम राजस्थान

18. पूर्वी राजस्थान

19. पश्चिम मध्य प्रदेश

20. पूर्वी मध्य प्रदेश

21. गुजरात

22. सौराष्ट्र

23. कोंकण और गोवा

24. मध्य महाराष्ट्र

25. मराठवाड़ा

26. विदर्भ

27. छत्तीसगढ़

28. तटीय आंध्र प्रदेश और यनम

29. तेलंगाना

30. रायलसीमा

31. तमिलनाडु, पुडुचेरी और कराईकल

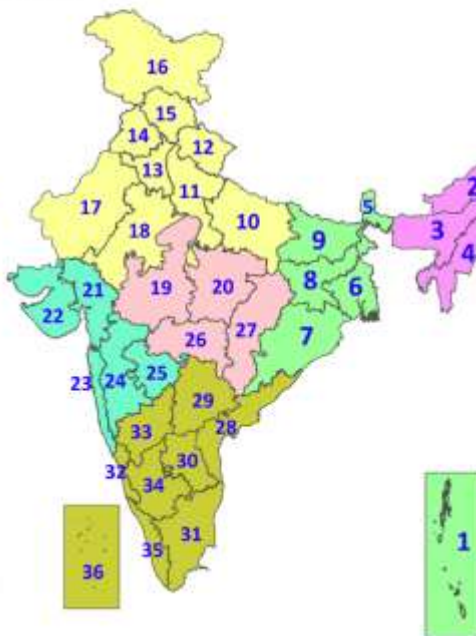
32. तटीय कर्नाटक

33. आंतरिक उत्तरी कर्नाटक

34. आंतरिक दक्षिणी कर्नाटक

35. केरल और माहे

36. लक्षद्वीप



1. Andaman & Nicobar Islands

2. Arunachal Pradesh

3. Assam & Meghalaya

4. Nagaland, Manipur, Mizoram & Tripura

5. Sub-Himalayan West Bengal & Sikkim

6. Gangetic West Bengal

7. Odisha

8. Jharkhand

9. Bihar

10. East Uttar Pradesh

11. West Uttar Pradesh

12. Uttarakhand

13. Haryana, Chandigarh & Delhi

14. Punjab

15. Himachal Pradesh

16. Jammu & Kashmir and Ladakh

17. West Rajasthan

18. East Rajasthan

19. West Madhya Pradesh

20. East Madhya Pradesh

21. Gujarat

22. Saurashtra

23. Konkan & Goa

24. Madhya Maharashtra

25. Marathwada

26. Vidarbha

27. Chhattisgarh

28. Coastal Andhra Pradesh & Yanam

29. Telangana

30. Rayalaseema

31. Tamilnadu, Puducherry & Karaikal

32. Coastal Karnataka

33. North Interior Karnataka

34. South Interior Karnataka

35. Kerala & Mahe

36. Lakshadweep

## SPATIAL DISTRIBUTION (% of Stations reporting)

% Stations	Category	% Stations	Category
76-100	Widespread (WS/Most Places)	26-50	Scattered (SCT/A Few Places)
51-75	Fairly Widespread (FWS/Many Places)	1-25	Isolated (ISOL)



Fog



Heavy Snow



Cold Wave



Heavy Rain



Dust Storm



Cold Day



Very Heavy Rain



Heat Wave



Ground Frost



Extremely Heavy Rain



Warm Night



Thunder & Lightning



Hot Day



Hailstorm



Hot & Humid



Dust Raising Winds



Strong Surface Winds

### COLOUR CODED WARNING

No Warning (No Action)

Watch (Be Aware)

Alert (Be Prepared To Take Action)

Warning (Take Action)

### Probabilistic Forecast

Terms	Probability of Occurrence (%)
Unlikely	< 25
Likely	25 - 50
Very Likely	50 - 75
Most Likely	> 75

\* Red colour warning does not mean "Red Alert", Red colour warning means "Take Action".

Forecast and Warning for any day is valid from 0830 hours IST of day till 0830 hours IST of next day.

For more details, kindly visit <https://mausam.imd.gov.in> or contact: 011-2434-4599

(Service to the Nation since 1875)

## DEFINITION/CRITERIA

### Rain/ Snow \*

Heavy: 64.5 to 115.5 mm/cm \*  
Very Heavy: 115.6 to 204.4 mm/cm \*  
Extremely Heavy: > 204.4 mm/cm \*

### Heat Wave

When maximum temperature of a station reaches  $\geq 40^{\circ}\text{C}$  for plains and  $\geq 30^{\circ}\text{C}$  for hilly regions  
(a) Based on Departure from normal

Heat Wave: Maximum Temperature Departure from normal  $4.5^{\circ}\text{C}$  to  $6.4^{\circ}\text{C}$ .

Severe Heat Wave: Maximum Temperature Departure from normal  $\geq 6.5^{\circ}\text{C}$

(b). Based on Actual maximum temperature

Heat Wave: When actual maximum temperature  $\geq 45^{\circ}\text{C}$ .

Severe Heat Wave: When actual maximum temperature  $\geq 47^{\circ}\text{C}$ .

(c). Criteria for heat wave for coastal stations

When maximum temperature departure is  $> 4.5^{\circ}\text{C}$  from normal. Heat Wave may be described provided maximum temperature  $\geq 37^{\circ}\text{C}$ .

### Warm Night

When maximum temperature remains  $40^{\circ}\text{C}$

Warm Night: When minimum temperature departure  $4.5^{\circ}\text{C}$  to  $6.4^{\circ}\text{C}$ .

Severe Warm Night: When minimum temperature departure  $> 6.4^{\circ}\text{C}$ .

### Cold Wave

When minimum temperature of a station  $\leq 10^{\circ}\text{C}$  for plains and  $\leq 0^{\circ}\text{C}$  for hilly regions.

(a). Based on departure

Cold Wave: Minimum Temperature Departure from normal  $-4.5^{\circ}\text{C}$  to  $-6.4^{\circ}\text{C}$ .

Severe Cold Wave: Minimum Temperature Departure from normal  $\leq -6.5^{\circ}\text{C}$

(b) Based on actual Minimum Temperature (for Plains only)

Cold Wave: When Minimum Temperature is  $\leq 4.0^{\circ}\text{C}$

Severe Cold Wave: When Minimum Temperature is  $\leq 2.0^{\circ}\text{C}$

(c) For Coastal Stations

When Minimum Temperature departure is  $\leq -4.5^{\circ}\text{C}$  & actual Minimum Temperature is  $\leq 15^{\circ}\text{C}$

### Cold Day

When minimum temperature of a station  $\leq 10^{\circ}\text{C}$  for plains and  $\leq 0^{\circ}\text{C}$  for hilly regions

Based on departure

Cold Day: Maximum Temperature Departure from normal  $-4.5^{\circ}\text{C}$  to  $-6.4^{\circ}\text{C}$ .

Severe Cold Day: Maximum Temperature Departure from normal  $\leq -6.5^{\circ}\text{C}$

### Fog

Phenomenon of small droplets suspended in air and the horizontal visibility  $< 1\text{km}$

Moderate Fog: When the visibility between 500-200 metres

Dense Fog: when the visibility between 50- 200 metres

Very Dense Fog: when the visibility  $< 50$  metres

### Thunderstorm

Sudden electrical discharges manifested by a flash of light (Lightning) and a sharp rumbling sound (thunder)

### Dust/Sand Storm

An ensemble of particles of dust or sand energetically lifted to great heights by a strong and turbulent wind.

### Frost

Ice deposits on ground

Air temperature  $\leq 4^{\circ}\text{C}$  ( over Plains)

### Squall

A strong wind that rises suddenly, lasts for atleast 1 minute.

Moderate: Wind speed 52-61 kmph

Severe: Wind speed 62-67 kmph

Very Severe: Wind speed  $> 67$  kmph

### Sea State

Effect of various waves in the sea over specific area

Rough to very rough: Wind speed 41-62 kmph (22-33 knots) & Wave height 2.5-6 metre

High to very high: Wind speed 63-117 kmph ( 34-63 knots) & Wave height 6-14 metre

Phenomenal: Wind speed  $> 117$  kmph ( $> 63$  knots) & Wave height  $> 14$  metre

### Cyclone

Cyclonic Storm: Wind speed 62-87 kmph (34-47 knots)

Severe Cyclonic Storm: Wind speed 88-117 kmph (48-63 knots)

Very Severe Cyclonic Storm: Wind speed 118-165 kmph (64 - 89 knots)

Extremely Severe Cyclonic Storm: Wind speed 166-220 kmph (90 -119 knots)

Super Cyclone Storm: Wind speed  $> 220$  kmph ( $> 119$  knots)

\* Red colour warning does not mean "Red Alert", Red colour warning means "Take Action".

Forecast and Warning for any day is valid from 0830 hours IST of day till 0830 hours IST of next day.

For more details, kindly visit <https://mausam.imd.gov.in> or contact: 011-2434-4599

(Service to the Nation since 1875)

**Hot and Humid:** When maximum temperatures remain  $3^{\circ}\text{C}$  above normal along with the above normal relative humidity.